



# Certificate of Analysis

## CANNABUSINESS LABORATORIES, LLC

### Customer:

Nirvana Organics  
9383 Cincinnati Columbus Highway, Westchester  
Cincinnati, OH 45069

Received Date **8/1/2025**

COA Released **8/4/2025**

Comments

Sample ID **250801003**

Order Number **CB250801001**

Sample Name **Delta 8 Gummy (Mango)**

External Sample ID

Batch Number

Product Type **Edible**

Sample Type **Edible**

### CANNABINOID PROFILE (Product Size = 3.15 g)

Analyte	LOQ (%)	% Weight	mg/g	mg/unit
CBC	0.01	ND	ND	ND
CBD	0.01	0.017	0.168	0.53
CBDa	0.01	ND	ND	ND
CBDV	0.01	ND	ND	ND
CBG	0.01	ND	ND	ND
CBGa	0.01	ND	ND	ND
CBN	0.01	ND	ND	ND
d8-THC	0.01	0.973	9.735	30.67
d9-THC	0.01	0.064	0.637	2.01
THCa	0.01	ND	ND	ND
<b>Total Cannabinoids</b>		<b>1.054</b>	<b>10.54</b>	<b>33.20</b>
<b>Total Potential THC</b>		<b>0.064</b>	<b>0.637</b>	<b>2.01</b>
<b>Total Potential CBD</b>		<b>0.017</b>	<b>0.168</b>	<b>0.53</b>
<b>Total Potential CBG</b>		<b>N/A</b>	<b>N/A</b>	<b>ND</b>

**Ratio of Total Potential CBD to Total Potential THC** **0.27 : 1**

**Ratio of Total Potential CBG to Total Potential THC** **N/A**

*\*Total Cannabinoids refers to the sum of all cannabinoids detected.*

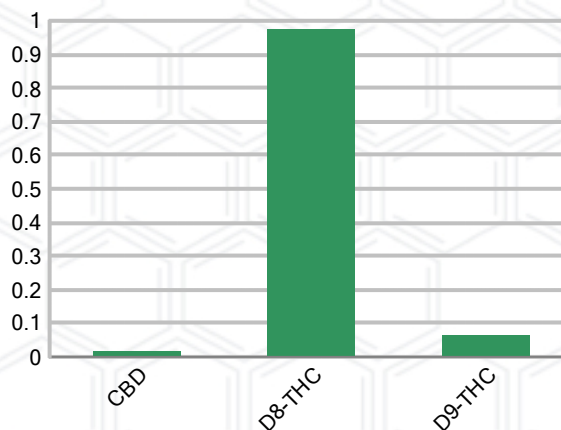
*\*Total Potential CBD = (0.877 x CBDa) + CBD. \*Total Potential THC = (0.877 x THCa) + THC. \*Total Potential CBG = (0.877 x CBGa) + CBG.*

*\*Total Potential THC/CBD are calculated to take into account the loss of an acid group during decarboxylation.*

### SAMPLE IMAGE



### CANNABINOIDS % Weight



*J. Hobgood*  
Laboratory Manager

SIGNATURE

Jamie Hobgood

LABORATORY MANAGER

08/04/2025 10:31 AM

DATE

This product has been tested by CannaBusiness Laboratories using validated testing methodologies and a quality system. Values reported relate only to the product tested. CannaBusiness Laboratories makes no claims as to the efficacy, safety, or other risks associated with any detected or non-detected levels of any compounds reported herein. This Certificate shall not be reproduced except in full, without the written permission of CannaBusiness Laboratories. Photo is of sample received by the lab and may vary from final packaging. The results apply to the sample as received.





# Certificate of Analysis

## CANNABUSINESS LABORATORIES, LLC

### Customer

Nirvana Organics

9383 Cincinnati Columbus Highway, Westchester

Cincinnati, OH 45069



**Sample Name:** Delta 8 Gummy (Mango)

**Sample ID:** 250801003

**Order Number:** CB250801001

**Product Type:** Edible

**Sample Type:** Edible

**Received Date:** 08/01/2025

**Batch Number:**

**COA released:** 08/04/2025 10:31 AM

### Potency (mg/g)

Date Tested: 08/01/2025

Method: CB-SOP-028

Instrument:

<b>0.064 %</b>	<b>0.017 %</b>	<b>1.054 %</b>	<b>10.54 mg/g</b>
Total THC	Total CBD	Total Cannabinoids	Total Cannabinoids

Analyte	Result	Units	LOQ	Result	Units
CBC (Cannabichromene)	ND	%	0.010	ND	mg/g
CBD (Cannabidiol)	0.017	%	0.010	0.168	mg/g
CBDa (Cannabidiolic Acid)	ND	%	0.010	ND	mg/g
CBDV (Cannabidivarin)	ND	%	0.010	ND	mg/g
CBG (Cannabigerol)	ND	%	0.010	ND	mg/g
CBGa (Cannabigerolic Acid)	ND	%	0.010	ND	mg/g
CBN (Cannabinol)	ND	%	0.010	ND	mg/g
D8-THC (D8-Tetrahydrocannabinol)	0.973	%	0.010	9.735	mg/g
D9-THC (D9-Tetrahydrocannabinol)	0.064	%	0.010	0.637	mg/g
THCa (Tetrahydrocannabinolic Acid)	ND	%	0.010	ND	mg/g



FJLA  
Testing  
Accreditation #109588

*J. Hobgood*

Laboratory Manager

Jamie Hobgood

08/04/2025 10:31 AM

SIGNATURE

DATE

NT = Not tested, ND = Not detected; LOQ = Limit of Quantitation; <LOQ = Detected; >ULOL = Above upper limit of linearity; CFU/g = Colony forming units per 1 gram; TNTC = Too numerous to count

This product has been tested by CannaBusiness Laboratories using validated testing methodologies and a quality system. Values reported relate only to the product tested. CannaBusiness Laboratories makes no claims as to the efficacy, safety, or other risks associated with any detected or non-detected levels of any compounds reported herein. This Certificate shall not be reproduced except in full, without the written permission of CannaBusiness Laboratories. Photo is of sample received by the lab and may vary from final packaging. The results apply to the sample as received.